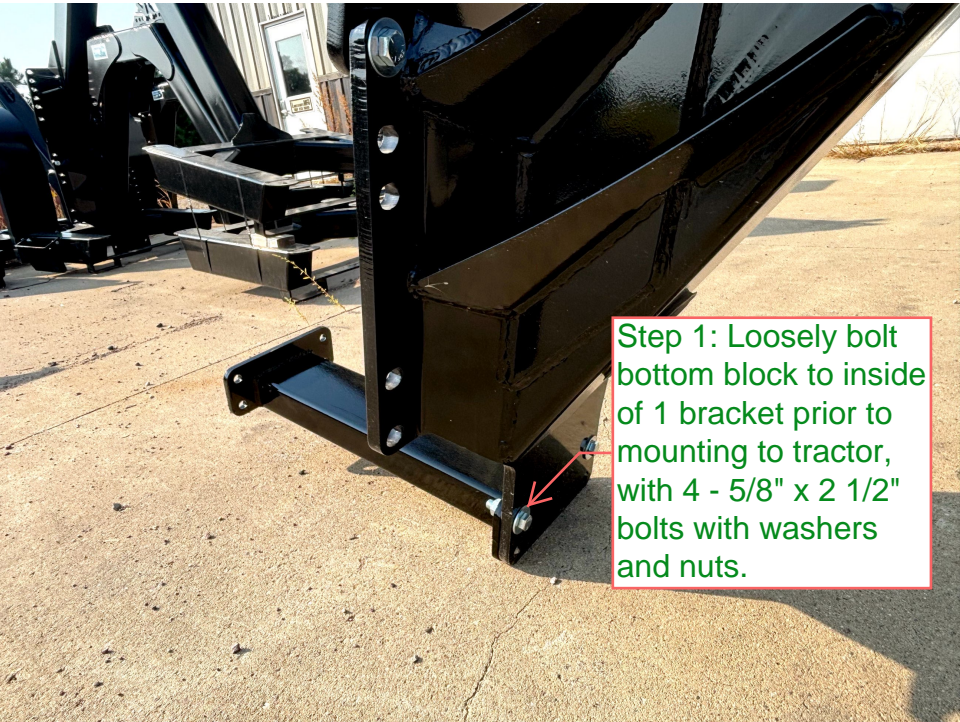


JD Front Dual 8000R, 8R, and 8RX Assembly for Mid-mount Brackets



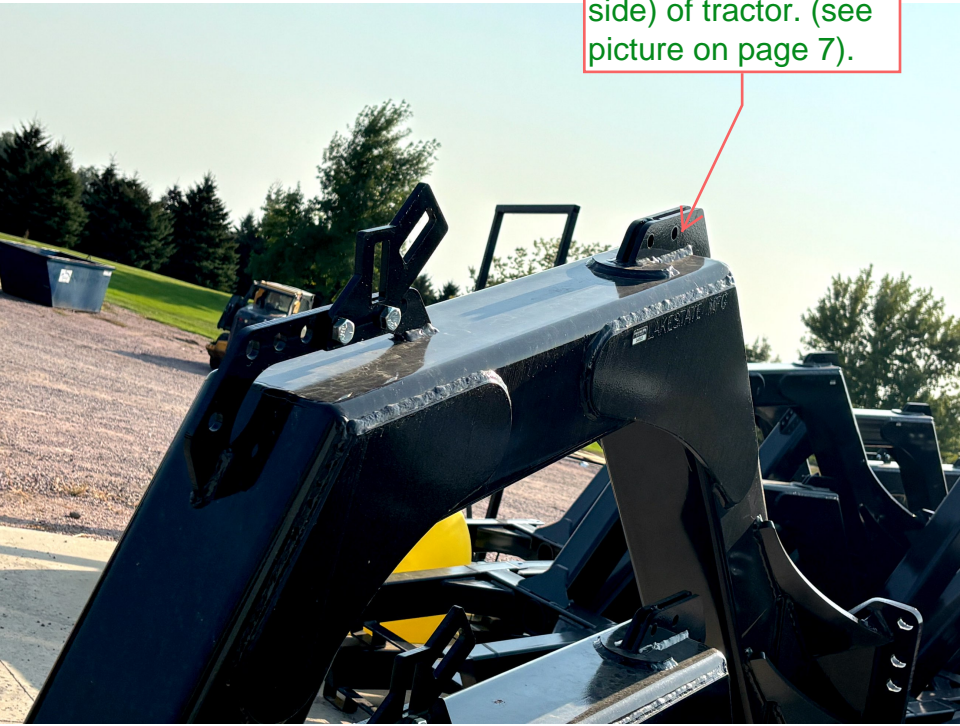
Step 1: Loosely bolt bottom block to inside of 1 bracket prior to mounting to tractor, with 4 - 5/8" x 2 1/2" bolts with washers and nuts.



Step 2: If using EVT or Powershift transmission, apply spacers to the correct side prior to mounting. Click link below for "EVT spacer assembly instructions."

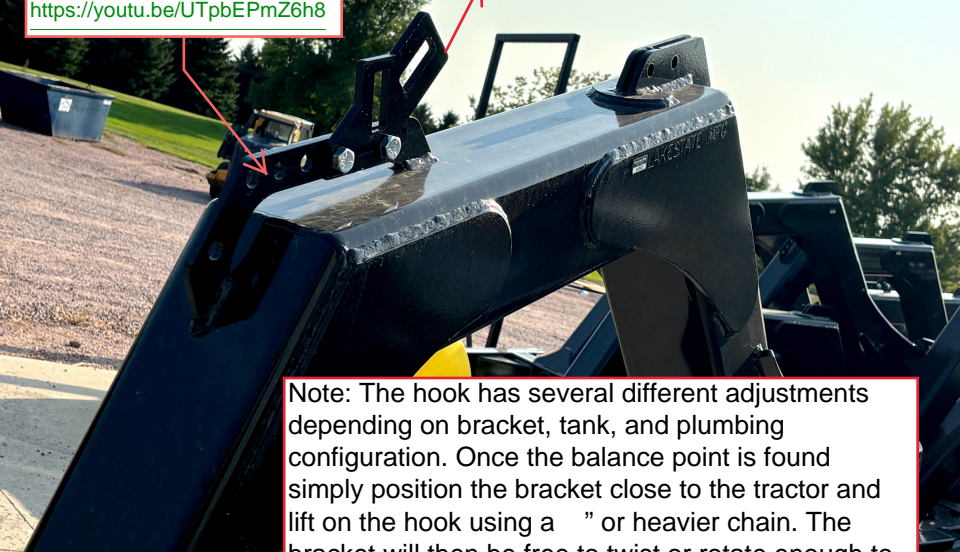
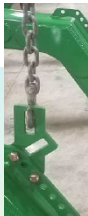
<https://www.lakestatemfg.com/wp-content/uploads/2024/11/JD-EVT-SPACER-ASSEMBLY-INSTRUCTIONS-.pdf>

Step 3: Attach top brace before attaching bracket to tractor. Notch side of top brace goes on left side (cab door side) of tractor. (see picture on page 7).



Step 4:
Use chain on lifting
hook. Adjust
placement using
holes for correct
balancing. Use the
link below to watch
the "lifting hook
video" (Note: Video is for
demonstration purposes and
does not have sound)

<https://youtu.be/UTpbEPmZ6h8>

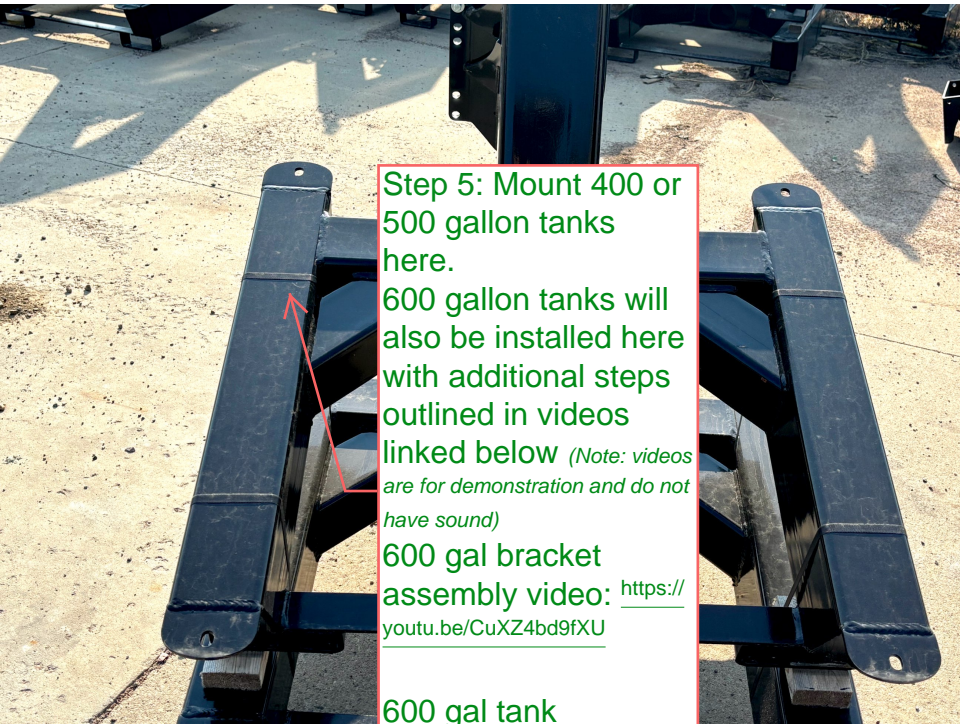


Note: The hook has several different adjustments depending on bracket, tank, and plumbing configuration. Once the balance point is found simply position the bracket close to the tractor and lift on the hook using a " " or heavier chain. The bracket will then be free to twist or rotate enough to get the bolts in place.

CAUTION!! Please be safe. Never get under a bracket when installing! We advise using two people to mount the brackets to insure safety and prevent damage.



Step 4- *continued*-
Using the lifting hook (see previous picture), align these holes with transmission housing and mount using 20x65mm bolts with washers. Lube washers and torque to max 300 ft lbs.



Step 5: Mount 400 or 500 gallon tanks here.

600 gallon tanks will also be installed here with additional steps outlined in videos linked below *(Note: videos are for demonstration and do not have sound)*

600 gal bracket assembly video: <https://youtu.be/CuXZ4bd9fXU>

600 gal tank installation video: <https://youtu.be/t4pqyYiT-Y0>

Step 6: Lube and tighten this rod nut to snug, then 1-2 rounds more. If it gets loose, lube and tighten a little more.

Top Brace

