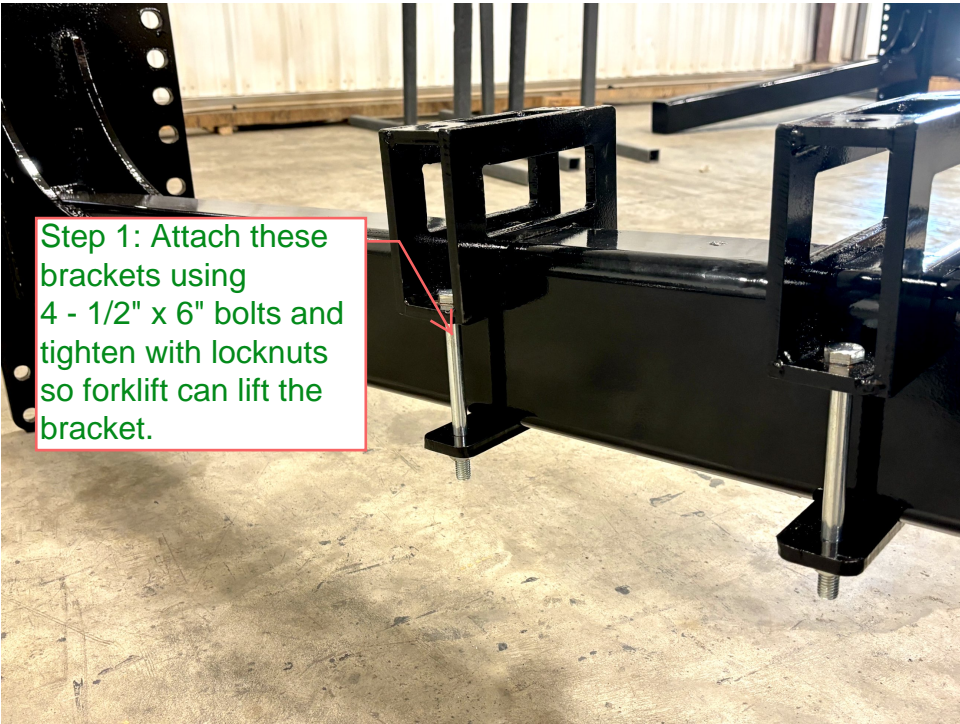
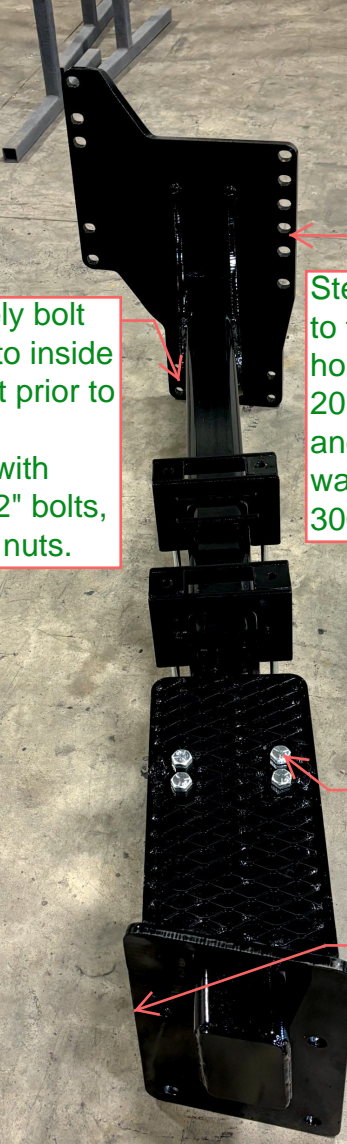


## 8RX Installation Instructions

Step 1: Attach these brackets using 4 - 1/2" x 6" bolts and tighten with locknuts so forklift can lift the bracket.



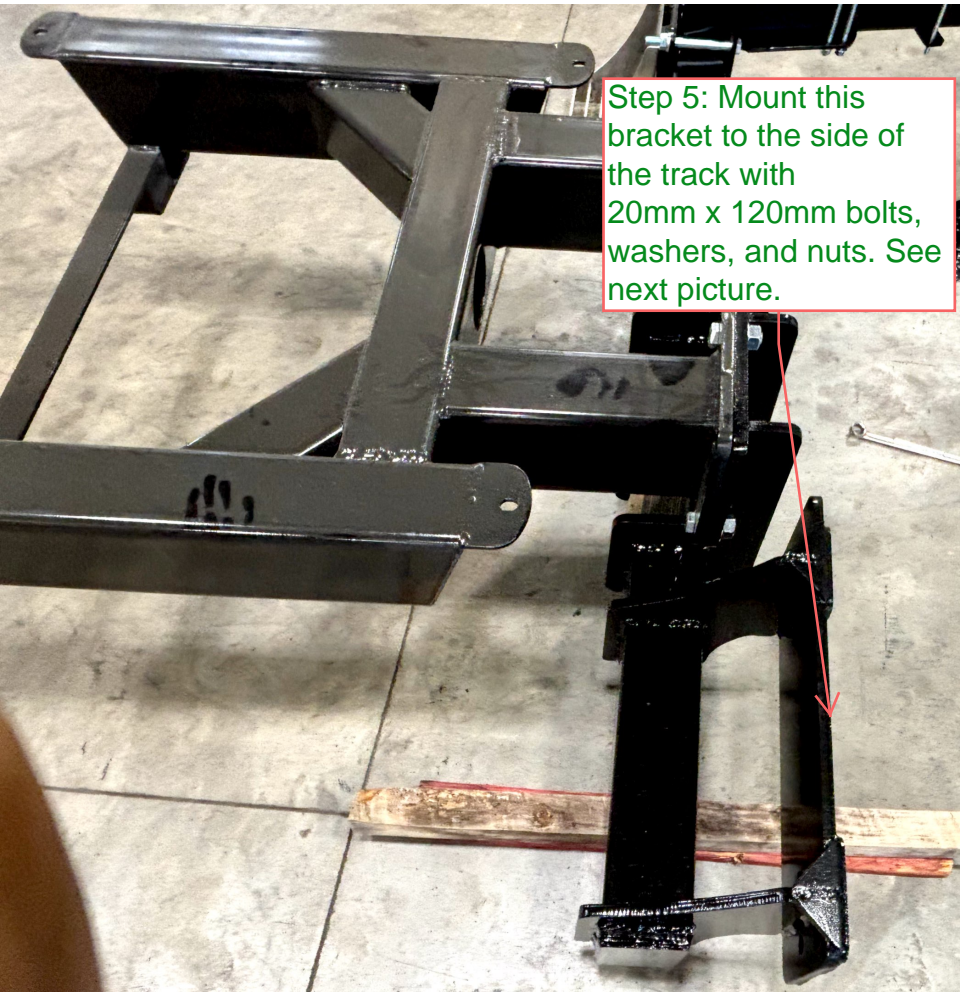


Step 2: Loosely bolt bottom block to inside of one bracket prior to mounting to transmission with 4 - 5/8" x 2 1/2" bolts, washers, and nuts.

Step 3: Attach bracket to transmission housing on tractor with 20mm x 65mm bolts, and washers. Lube washers and tighten to 300 ft lbs.

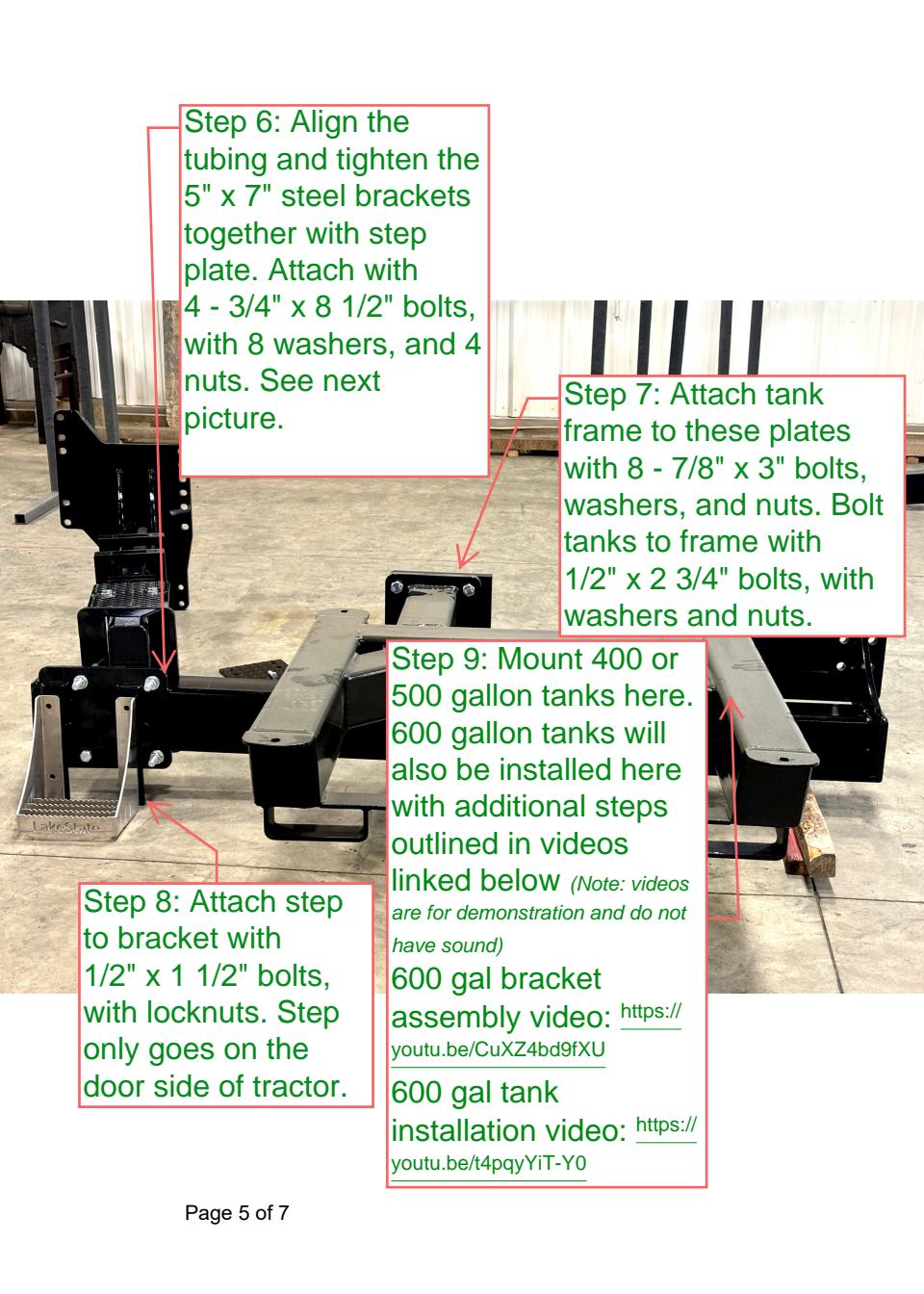
Step 4: Fasten this piece with 4) 5/8"x8" bolts with locknuts.

Make sure edge of this piece is around 6 1/2" back from the edge of 4" x 6" steel



Step 5: Mount this bracket to the side of the track with 20mm x 120mm bolts, washers, and nuts. See next picture.





Step 6: Align the tubing and tighten the 5" x 7" steel brackets together with step plate. Attach with 4 - 3/4" x 8 1/2" bolts, with 8 washers, and 4 nuts. See next picture.

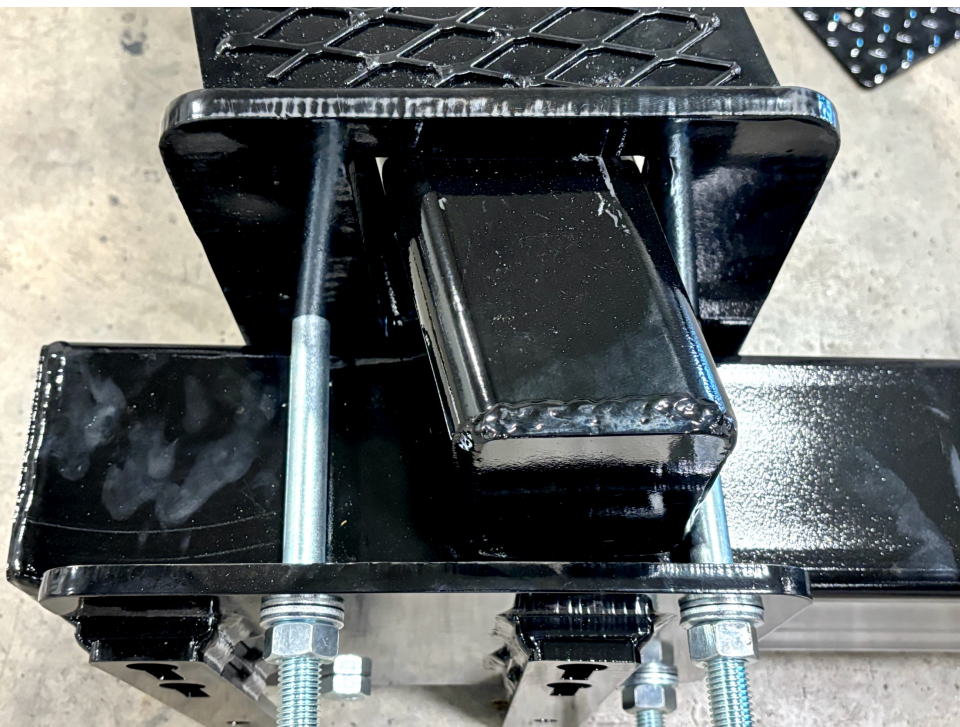
Step 7: Attach tank frame to these plates with 8 - 7/8" x 3" bolts, washers, and nuts. Bolt tanks to frame with 1/2" x 2 3/4" bolts, with washers and nuts.

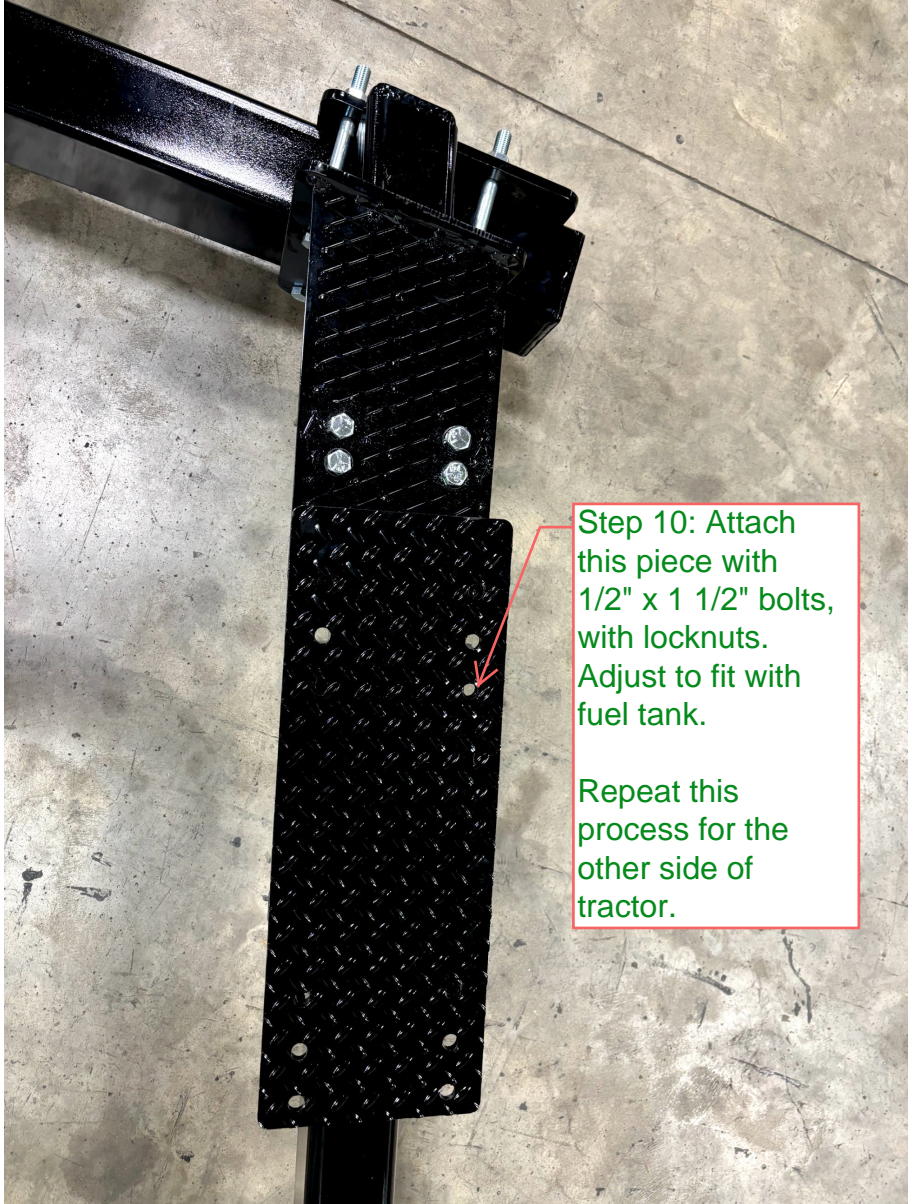
Step 9: Mount 400 or 500 gallon tanks here. 600 gallon tanks will also be installed here with additional steps outlined in videos linked below *(Note: videos are for demonstration and do not have sound)*

Step 8: Attach step to bracket with 1/2" x 1 1/2" bolts, with locknuts. Step only goes on the door side of tractor.

600 gal bracket assembly video: <https://youtu.be/CuXZ4bd9fXU>

600 gal tank installation video: <https://youtu.be/t4pqyYiT-Y0>





Step 10: Attach this piece with 1/2" x 1 1/2" bolts, with locknuts. Adjust to fit with fuel tank.

Repeat this process for the other side of tractor.